

Epidemiološki izvještaj o COVID-19 u Federaciji BiH – 27.12.2022.
Epidemiological report on COVID-19 in the Federation of BiH - 27.12.2022.

UKUPAN BROJ TESTOVA

TOTAL NUMBER OF TESTS

1343349

UKUPNO POTVRĐENIH

TOTAL CONFIRMED

264326

UKUPNO IZLIJEČENIH

TOTAL RECOVERED

249324

UKUPNO UMRLIH

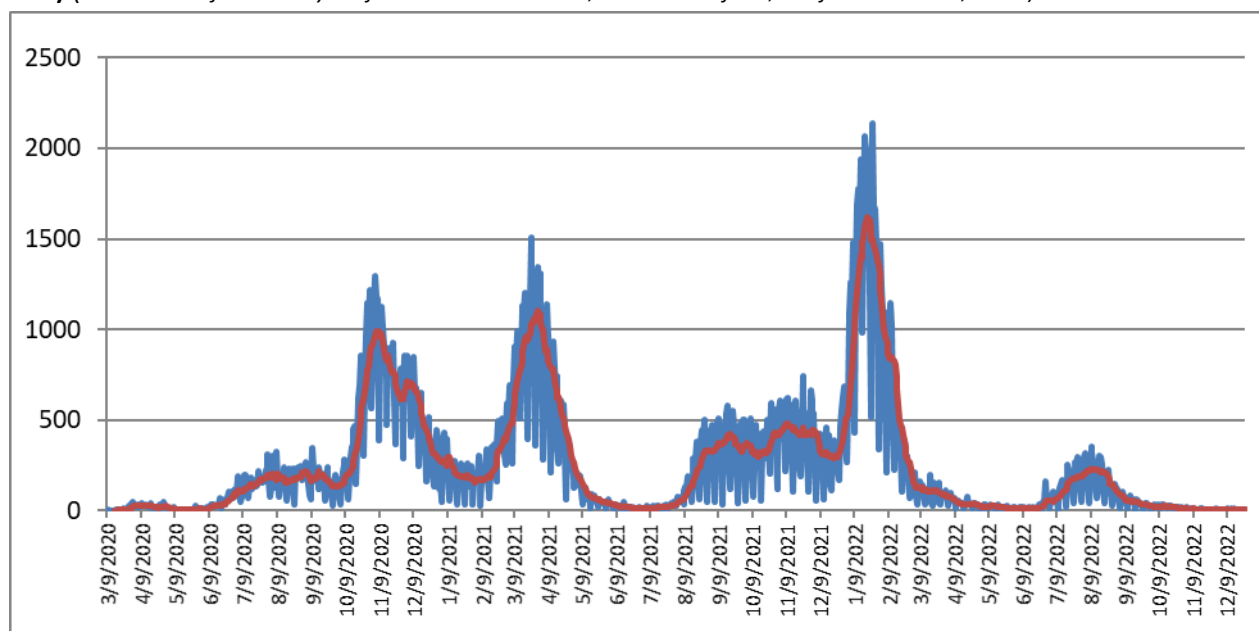
TOTAL DEATHS

9086

Prema podacima dostavljenim Zavodu za javno zdravstvo FBiH u Federaciji BiH, zaključno s 27.12.2022. u 12h, registrirano je 264 326 laboratorijski potvrđenih slučajeva COVID-19 bolesti i 9 086 smrtnih slučajeva povezanih s COVID-19.

According to the data submitted to the Institute of Public Health of the FBiH in the Federation of BiH, as of December 27, 2022. at 12 a.m., 264,326 laboratory-confirmed cases of COVID-19 and 9,086 deaths related to COVID-19 were registered.

Grafikon 1. Distribucija laboratorijski potvrđenih slučajeva COVID-19, Federacija BiH (do 27.12.2022. u 12h) (*Distribution of laboratory confirmed cases COVID-19, Federation of BiH, as of December 27, 2022.*)



Plava linija – dnevni broj novih slučajeva, crvena linija – sedmodnevni prosjek broja novih slučajeva. (Blue line - daily number of new cases, red line - seven-day moving average.)

Tablica 1. Broj i incidenca laboratorijski potvrđenih i smrtnih slučajeva COVID-19 prema kantonima, Federacija BiH, 27.12.2022. (Number and incidence of laboratory confirmed cases and deaths of COVID-19 to the cantons in FB&H, as of December 27, 2022.)

| KANTON CANTON | Ukupan broj potvrđenih slučajeva <i>Total number of confirmed cases</i> | Incidenca na 100.000 <i>Incidence per 100,000</i> | Slučajevi u zadnjih 7 dana <i>Cases in the last 7 days</i> | 7-dnevna incidenca na 100.000 <i>7-day incidence per 100,000</i> | Broj smrtnih slučajeva <i>Number of deaths</i> | Smrtnost na 100.000 <i>Mortality per 100,000</i> |
|---|---|---|--|--|--|--|
| Unsko-sanski kanton <i>Una-Sana Canton</i> | 10379 | 3874.58 | 6 | 2.24 | 778 | 290.44 |
| Posavski kanton <i>Posavina Canton</i> | 4517 | 10924.88 | 3 | 7.26 | 162 | 391.82 |
| Tuzlanski kanton <i>Tuzla Canton</i> | 47164 | 10748.14 | 0 | 0 | 1911 | 435.5 |
| Zeničko-dobojski kanton <i>Zenica-Doboj Canton</i> | 20431 | 5702.33 | 10 | 2.79 | 1757 | 490.38 |
| Bosansko-podrinjski kanton <i>Bosnian-Podrinje Canton</i> | 2744 | 11909.21 | 0 | 0 | 128 | 555.53 |
| Srednjobosanski kanton <i>Central Bosnia Canton</i> | 13438 | 5377.8 | 1 | 0.4 | 855 | 342.17 |
| Hercegovačko-neretvanski kanton <i>Herzegovina-Neretva Canton</i> | 53470 | 24643.96 | 0 | 0 | 897 | 413.42 |
| Zapadnohercegovački kanton <i>West Herzegovina Canton</i> | 17166 | 18381.97 | 0 | 0 | 414 | 443.33 |
| Kanton Sarajevo <i>Sarajevo Canton</i> | 87106 | 20715.06 | 4 | 0.95 | 1974 | 469.45 |
| Kanton 10 <i>Canton 10</i> | 7911 | 9888.26 | 0 | 0 | 210 | 262.49 |
| Federacija BiH <i>The Federation of B&H</i> | 264326 | 12069.14 | 24 | 1.1 | 9086 | 414.87 |

Na nivou Federacije BiH, 7-dnevna incidenca iznosi 1,1 slučaj/100.000 stanovnika. U posljednjih sedam dana, višu incidencu od prosječne zabilježene u Federaciji BiH imaju Posavski kanton, Zeničko-dobojski kanton i Unsko-sanski kanton. Rezultati antigenskih testiranja nisu uključeni u ovaj izvještaj, te stoga ne prikazuje realno stanje epidemiološke situacije. S obzirom na lakšu dostupnost, brže rezultate testa i nižu cijenu testiranja, većina zdravstvenih ustanova se odlučuje na testiranje RAT (brzi antigenski test), iako ZZJZFBiH u svojim preporukama navodi da je u situaciji niske cirkulacije virusa SARS-CoV-2 u zajednici pouzdanost RAT značajno smanjena i preporuča se testiranje PCRom.

U proteklih 7 dana zabilježen je 1 smrtni slučaj.

In the Federation of Bosnia and Herzegovina, 7-day incidence is 1,1 case/100,000 population. In the last seven days, Posavina Canton, Zenica-Doboj Canton and Una-Sana Canton have a higher incidence than average recorded in the Federation of BiH. The results of antigen testing are not included in this report, and therefore do not show the real state of the epidemiological situation. Given the easier availability, faster test results and lower cost of testing, most health care institutions opt for RAT (rapid antigen test), although ZZJZFBiH states in its recommendations that in a situation of low circulation of SARS-CoV-2 virus in the community the reliability of RAT significantly reduced and PCR testing is recommended.

1 case of death was reported in last 7 days.

Hospitalizirani

Hospitalizations

U Federaciji BiH, na bolničkom liječenju* trenutno su 24 osobe zbog COVID-19, od kojih su 2 (8,3%) na invazivnoj mehaničkoj ventilaciji. Prema dostavljenim podacima, od 16 hospitaliziranih osoba s podatkom o cjepnom statusu, 14 (87,5%) je necijepljenih i nepotpuno cijepljenih, a 2 (12,5%) potpuno cijepljenih.

In FB&H, there are currently 24 people in hospitals due to COVID-19, 2 (8,3%) of whom are in invasive mechanical ventilation. According to the submitted data, out of 16 hospitalized persons with data on vaccinated status, 14 (87,5%) were unvaccinated and incompletely vaccinated, and 2 (12,5%) were fully vaccinated.

**Nedostaju podatci iz Zapadnohercegovačkog kantona.*

**Data from the West Herzegovina Canton are missing.*

Ovaj epidemiološki izvještaj sadrži informacije prikupljene putem uspostavljenog sustava nadzora nad COVID-19 u Federaciji Bosne i Hercegovine, na tjednoj osnovi. Informacije o dnevnoj epidemiološkoj situaciji dostupne su na online platformi: www.covid-19.ba.

Izvori: online platforma www.covid-19.ba, izvještaji kantonalnih zavoda za javno zdravstvo i zdravstvenih ustanova u Federaciji Bosne i Hercegovine.

Izvještaj pripremila Služba za epidemiologiju, ZZJZ FBiH.

This report summarizes the information from the surveillance systems which are used to monitor the COVID-19 in the Federation of Bosnia and Herzegovina. Information on the daily epidemiological situation is available on the online COVID-19 dashboard: www.covid-19.ba.

Information sources: online www.covid-19.ba platform, reports by cantonal public health institutes and health institutions in the Federation of Bosnia and Herzegovina.

Report prepared by the Department of Epidemiology, PHI FB&H.